



GOOD NEWS TRAVELs, INC. presents:

WHALES IN THE WILD

Hawaii

February 6-15 (16), 2025

TRIP INCLUDES:

- Local roundtrip Airport transfers
- Round-trip airfare to Honolulu
- 2 nights pre-cruise on Waikiki Beach at the Waikiki Beach Marriott
- Deluxe private motor coach transportation throughout Hawaii
- 7 nights aboard the Pride of America in selected stateroom
- 6 included shore excursions
- All onboard meals
- Hawaii beverage package (per person)
- Ultimate Dining package (per person)
- Internet package (150 minutes per cabin)
- \$100 onboard credit (per cabin)
- All port taxes and fees
- All air taxes and fees
- Professional Tour Manager from start to finish
- All gratuities for drivers, guides, luggage handling and Tour Manager

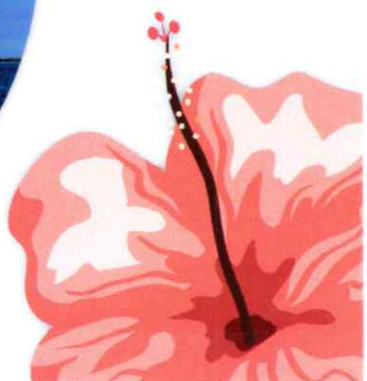


Kauai
Nawiliwili

Oahu
Honolulu

Maui
Kahului

Hawaii
Kona
Hilo



DAY 1: Indianapolis - Honolulu

Today we depart aboard our flight to the beautiful Hawaiian Islands. As we arrive in the "Aloha State" we are greeted the traditional Hawaiian way, with a beautiful flower lei. We transfer to our resort hotel on Waikiki Beach for a luxurious 2-night stay.

DAY 2: Waikiki at leisure

Today is yours to enjoy at your leisure. Book an optional excursion or kick back on the world-famous Waikiki Beach. Do as much as you want, or as little - the choices are endless, and the choice is yours!



DAY 3: Pearl Harbor - USS Battleship Missouri - Honolulu City tour - Board the Pride of America

Today you will learn about the men and women who gave their lives on December 7, 1941. We will view the exhibits at the Visitor's Center followed by a film narrating the events that took place that day, then we board a US Navy launch that will take us to the USS Arizona Memorial. 1117 airman, sailors and marines are still entombed in the

sunken battleship. Next you will take a quick shuttle over to the USS Battleship Missouri. Here you get to tour the enormous ship and walk on the surrender deck where General McArthur signed the treaty to end WWII.

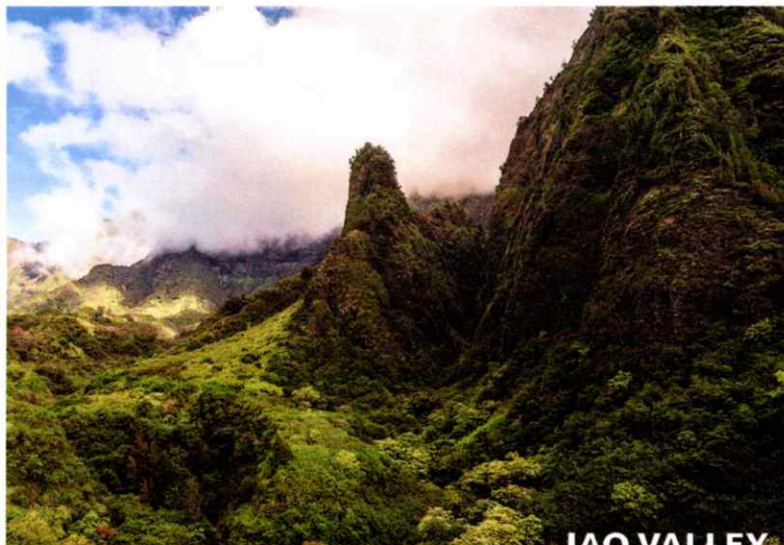
Next sit back and enjoy a narrated driving tour of Honolulu. Sights to see include The Punchbowl, Governor's Mansion, The State Capital Building, Iolani Palace and the King Kamehameha Statue. Next, we arrive at the pier and board our "home away home" for the next 7-nights - Norwegian Cruise Line's Pride of America.

DAY 4: Kahului, Maui

The perfect slice of Maui awaits you on this INCLUDED scenic tour of the Best of Maui. It's a comprehensive taste of the best that Maui has to offer, and a window into why this beloved island is one of the world's most popular visitor destinations.

Towering emerald peaks guard the lush valley floor of Iao Valley State Park. Located in Central Maui just west of Wailuku, this peaceful 4,000-acre, 10-mile long park is home to one of Maui's most recognizable landmarks, the 1,200-foot Iao Needle. This iconic green-mantled rock outcropping overlooks Iao Stream and is an ideal attraction for easy hiking and sightseeing. Aside from its natural tropical beauty, sacred Iao Valley has great historical significance. It was here in 1790 at the Battle of Kepaniwai that King Kamehameha I clashed with Maui's army in his quest to unite the islands. Even with Iao Needle serving as a lookout point, Kamehameha defeated Maui's forces in a ferocious battle that ultimately changed the course of Hawaiian history.

Afterwards we travel to Old Lahaina town where you will enjoy some free time to explore this old whaling seaport lined with restaurants, shops and art galleries. Later in the afternoon we return to the Pride of America where the ship will remain docked overnight.



DAY 5: Kahului, Maui free day - Ship sets sail for Hilo

Enjoy a day of leisure, return to Lahaina town or explore more of Maui at your own pace. The Pride of America sets sail for Hilo at 6:00pm. All aboard.

KILAUEA VOLCANO

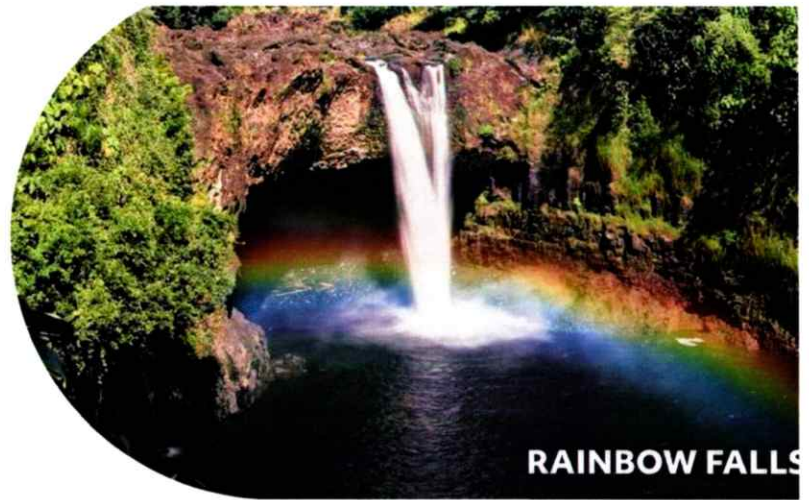


DAY 6: Hilo, Hawaii - Sail to Kona

When you awake this morning, we will have arrived the Big Island and the Port of Hilo. Today's INCLUDED tour will be Volcanoes National Park. Our coach will follow the 11-mile Crater Rim Drive as it traverses the caldera floor. Gaze at sulfa emitting mud pots, steam bluffs and waterfalls. You will visit the Jagger Museum, Kilauea Crater Overlook and walk through the Thurston Lava Tube, a 500-year old lava cave of molten lava forming a massive, hollow chamber. As you walk through its depths, consider that lava still flows through similar tubes not far away! Also included Akatsuka Orchid Nursery, Rainbow Falls and the Mauna Loa Macadamia Nut Factory. Tonight, your ship will sail past Kilauea volcano as its blistering lava crashes into the sea before your eyes!

DAY 7: Kona, Hawaii - Sail to Kauai

Today we tender into the Port of Kona. You'll begin your day with yet another INCLUDED tour in Kona. We will visit to Kona Coffee Company, where you will see the process of coffee production from seed to cup, with samplings. Next, you will visit Pu'uhonua o Honaunau or commonly known as The Place of Refuge. Did you know that in Ancient old Hawaii if you broke the law or Kapu the punishment was death? Your only chance of survival was to reach the Pu'uhonua sanctuary. Today you can visit the Royal Grounds where wooden images surround the bones of the chiefs, a very sacred place. Tour ends by lunch time and you can choose to tender back to the ship or enjoy more of downtown Kona and its wide assortment of shops and restaurants. All aboard by dinner time and the Pride of America will sail past the 15-mile Napali Coast, one of the most beautiful and pristine coastlines in the world.



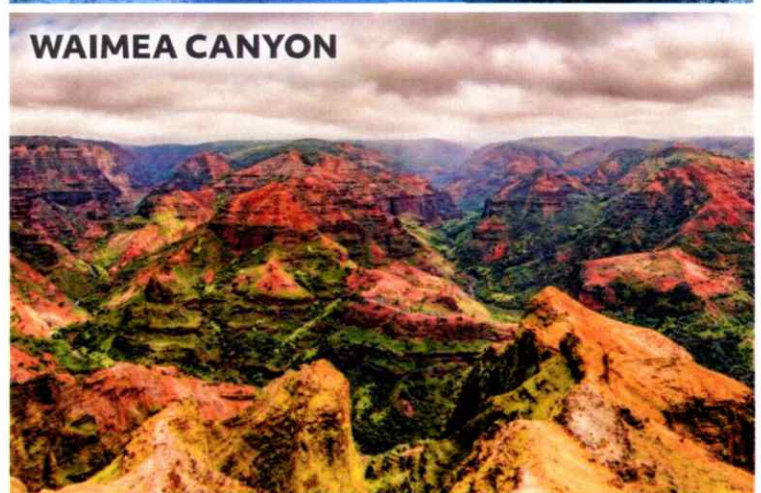
RAINBOW FALLS

DAY 8: Nawiliwili, Kauai

Ride with us up the mountain to the 3,400-foot level and overlook Waimea Canyon, "The Grand Canyon of the Pacific." We promise a visual history along the way – Old Koloa Town, circa 1834, heart of Hawaii's first sugar cane plantation, and Waimea, the little town that grew up where Captain Cook first set foot in Hawaii in 1778. Follow the footsteps of Captain Cook along this memorable INCLUDED Kauai tour. The overlook at Opaekaa Falls is another stop that will surely secure your love of the Garden Island. Tour ends early afternoon and the ship remains docked in port overnight.



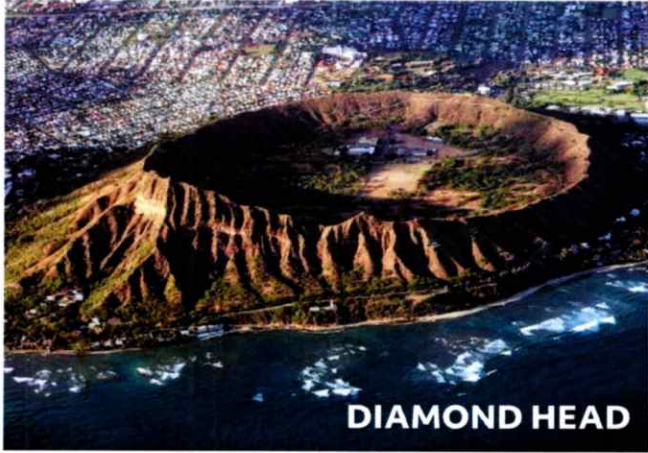
NĀ PALI COAST



WAIMEA CANYON

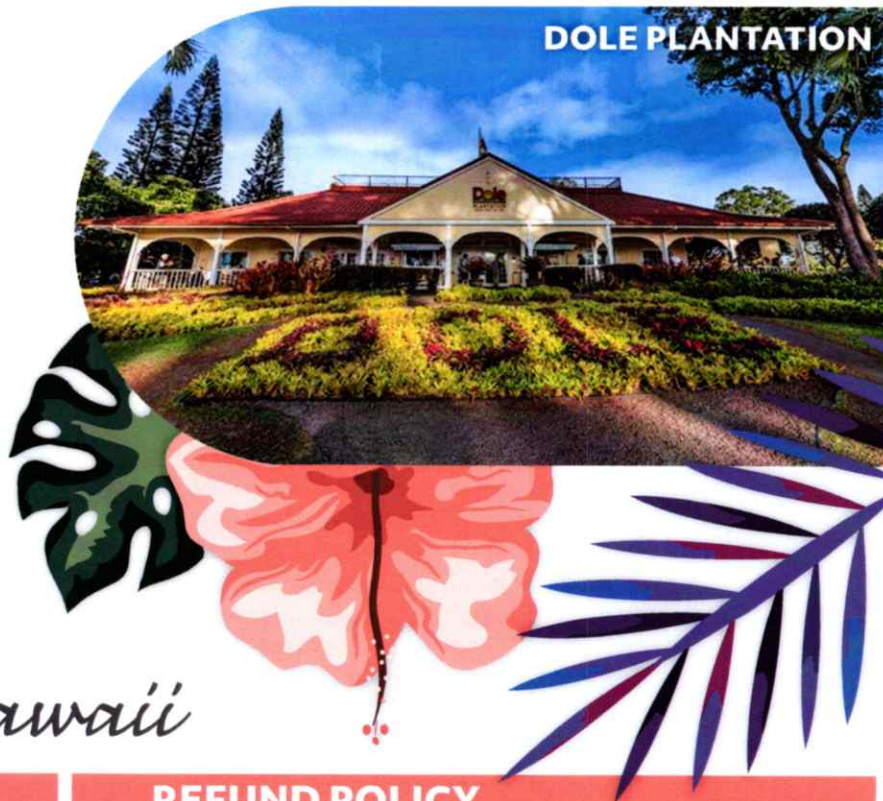
DAY 9: Kauai at leisure - Sail to Honolulu

A free morning for some last-minute gift shopping or an optional helicopter flightseeing excursion. This afternoon the Pride of America will take us on our final overnight journey back to the Port of Honolulu. Enjoy a gala farewell dinner as our crew has special plans for us. Get together with friends, both old and new, to reminisce about your Hawaiian vacation.



DAY 10: Arrive Honolulu - Oahu Circle Island Tour - Fly home

The Pride of America returns to Honolulu this morning and we disembark the ship. But we're not done yet. Enjoy one last INCLUDED tour! This breathtaking 120-mile "Circle Island Tour" takes us around Oahu visiting Hawaii's most famous landmark Diamond Head, Hanauma Bay, Halona Blowhole, Pali Lookout, big wave beaches of the North Shore and the un-paralleled South Pacific vistas of the Eastern Side of the island. We will make a brief stop at the Dole Plantation prior to arriving at the Honolulu Airport. We will board our flight home with fond memories of the "Aloha State" and this amazing Hawaiian vacation.



WHALES IN THE WILD *Hawaii*

PAYMENT POLICY

A \$500 deposit per person is due to secure your reservation and no later than **June 1st, 2024**. This trip may sell out fast! Final payment is due **October 18, 2024**.

Please make checks payable to:
Good News Travels and send to Good News Travels,
1776 Springwood Dr., Sullivan, IN 47882

Prefer to pay by debit or credit card (no additional fees) call Nowak Tours at 330-483-4900

TRAVEL INSURANCE

Optional trip cancellation/medical insurance is available and strongly recommended. Insurance premium is due with deposit and is refundable up to final payment date. The premium for Inside and Outside cabins is \$477 and \$560 for Balcony cabins.

REFUND POLICY

100% of the tour cost will be refunded on all cancellations made by the final payment date. Cancellations made after the final payment date are subject to fees assessed by the vendors on this itinerary if insurance is not purchased.

TOUR FARE

Per person based on double occupancy, call for single rates

Inside stateroom: \$5,899
Outside stateroom: \$6,099
Balcony stateroom: \$6,799